



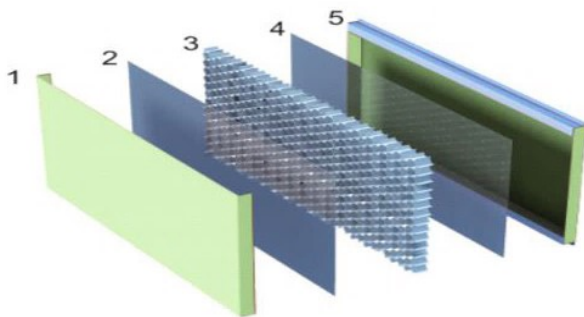
*Aluminium  
Honeycomb Panel*



# Introduction

Handa Aluminum honeycomb panel consists of two aluminum sheets as face and hexagonal honeycomb cells as core materials, bonded with two-component high temperature curing polyurethane glue.

# Panel Structure



- 1.Roll-form aluminum front skin
- 2.Polyurethane glue
- 3.Aluminum honeycomb core
- 4.Polyurethane glue
- 5.Roll-form aluminum back skin

# Specification

Face sheet: 3003 aluminum alloy

Top Finish: PVDF, PE coating

Length:  $\leq 12000\text{mm}$

Width:  $\leq 2200\text{mm}$

Thickness: 6/8/10/12/15/20/25/50mm

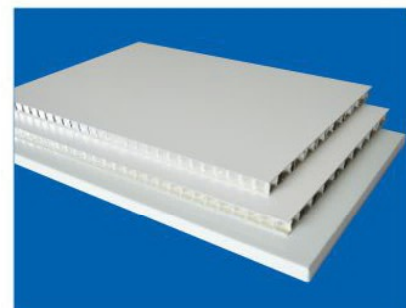
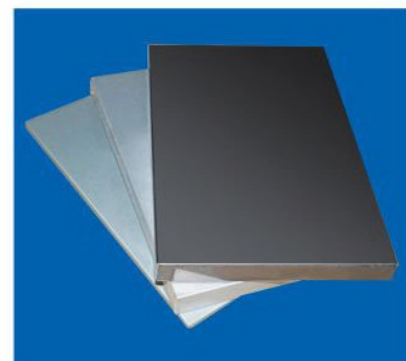
Density:  $5.0\text{-}5.5\text{ kg/m}^2$

Color: Handa Standard Colors or Customized

Fire Retardant Classification: BS476 Part 6&7 Class 0

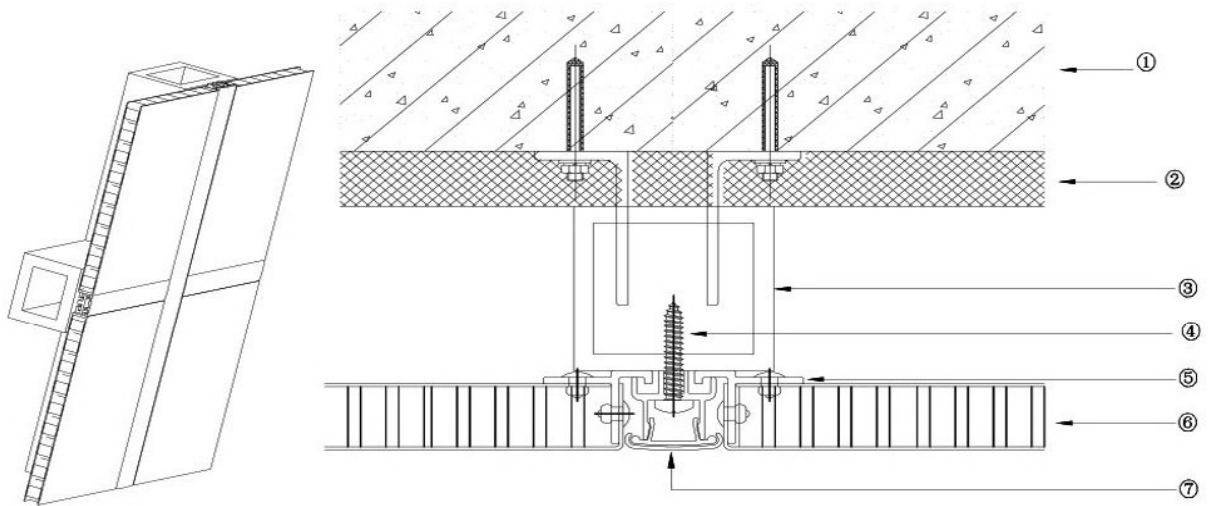
BS476 Part 4 Noncombustible

GB8254-1997 Class A2



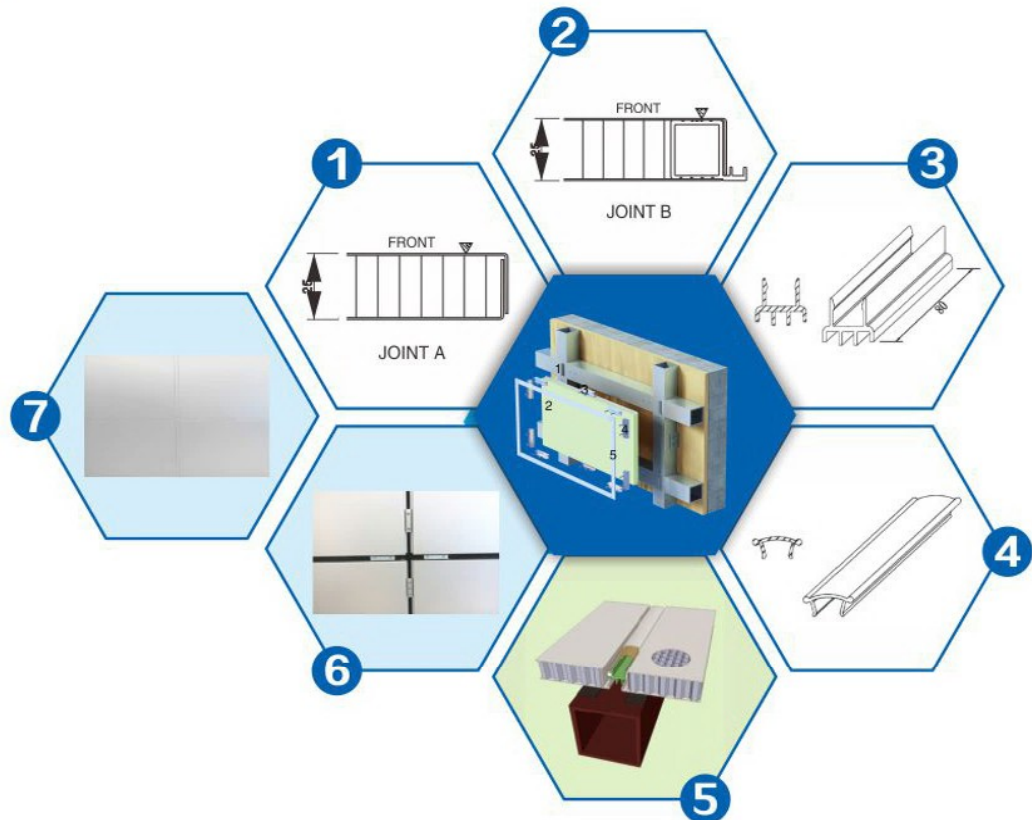
Panel

# 25mm Cassette Honeycomb Panel Installation System

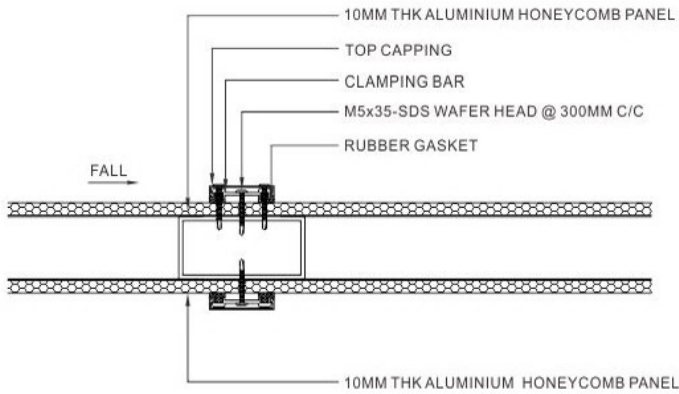


- 1. Brick wall or cement
- 2. Insulation layer
- 3. Carrier
- 4. Bolt
- 5. Buckle
- 6. Honeycomb Panel
- 7. Metal capping strip

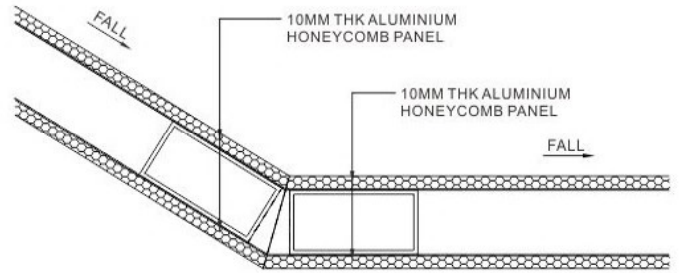
## How to Install



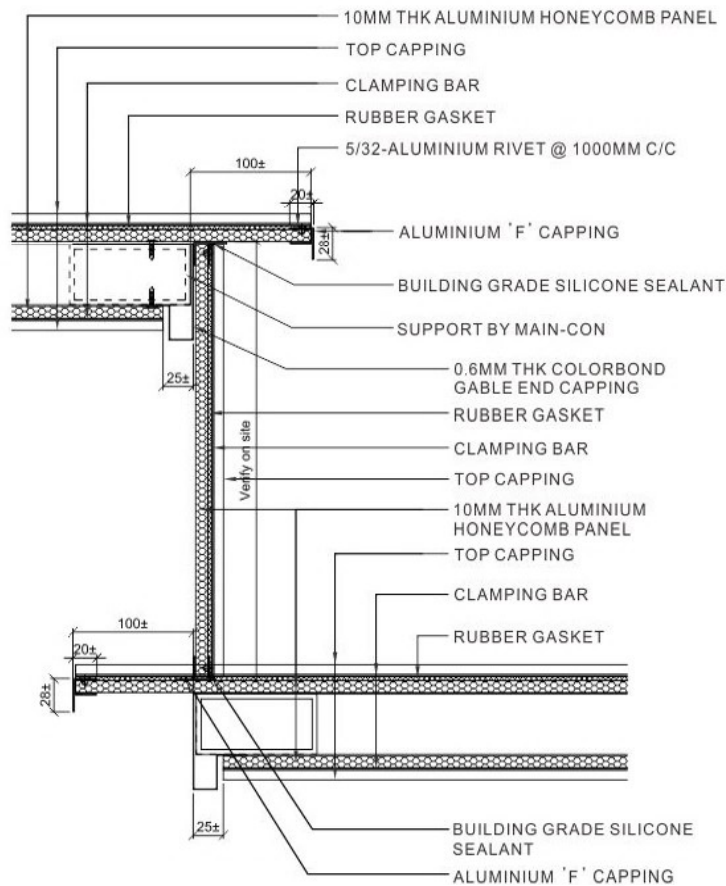
# 10mm Honeycomb Panel Installation Detail



**Connection Detail**

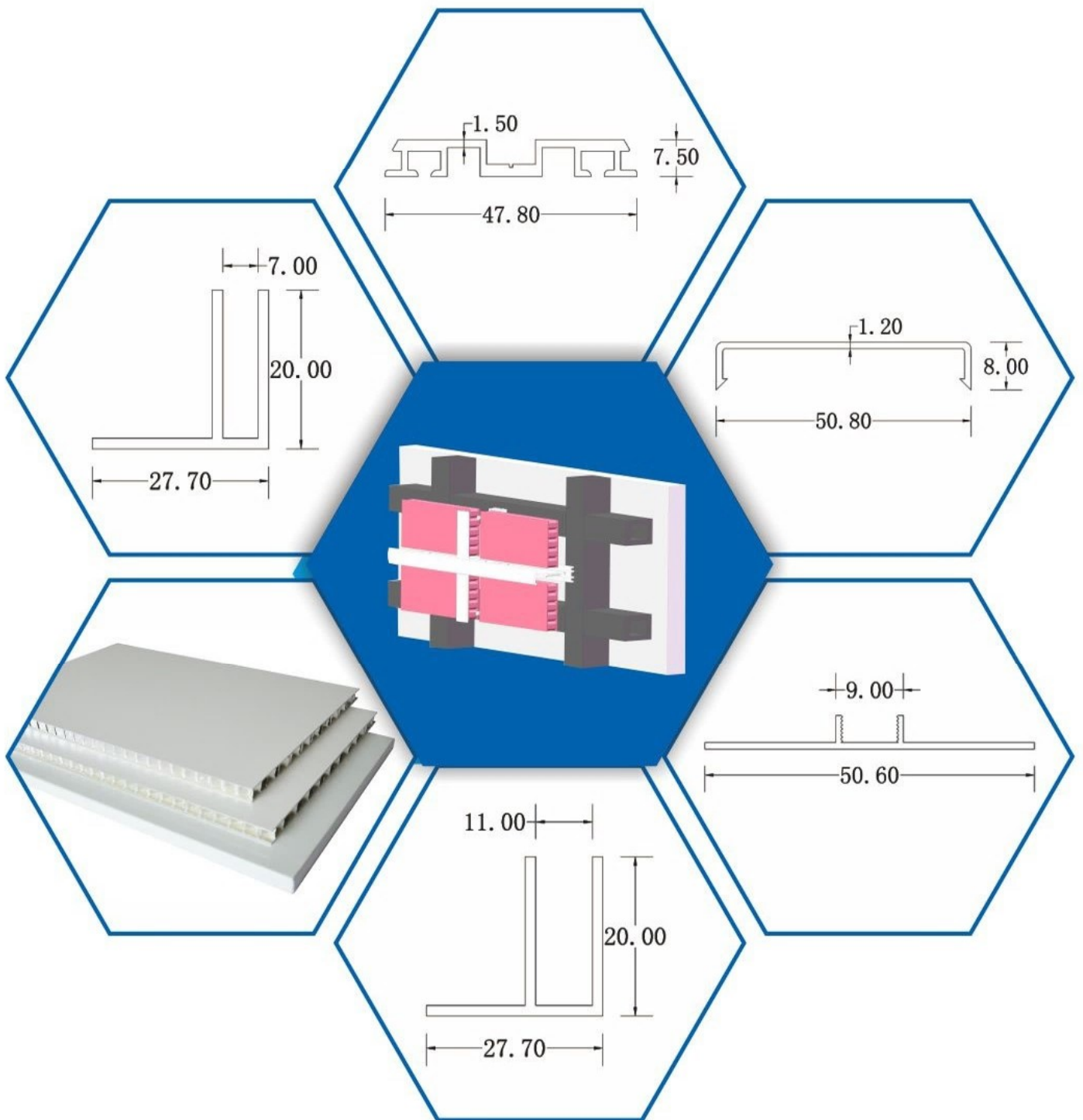


**Panels Jointing Detail**



**Fascia Detail**

# How to Install



## Related Project



Malaysia MRT



Handa Building Materials (Yingde) Co., Ltd

Add: No.1, Deming Road, Yinghong Town, Yingde City, Qingyuan, Guangdong, China

Tel: +86-0763-2828103

Fax: +86-0763-2828102